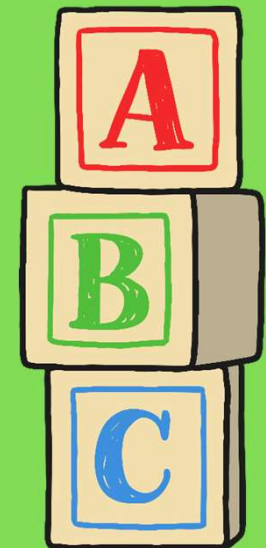




Year One

Phonics Screening Check

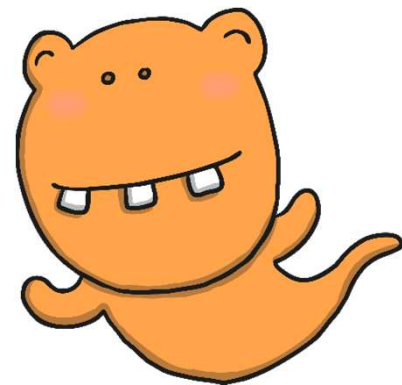
Children's Materials



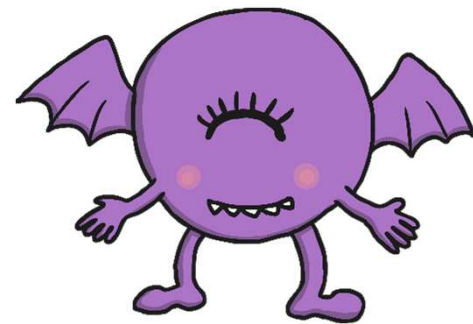
pib



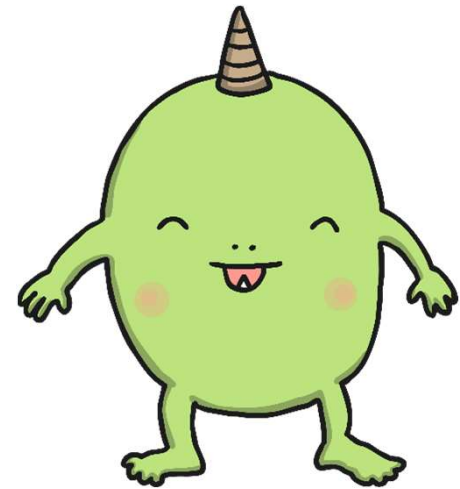
vus



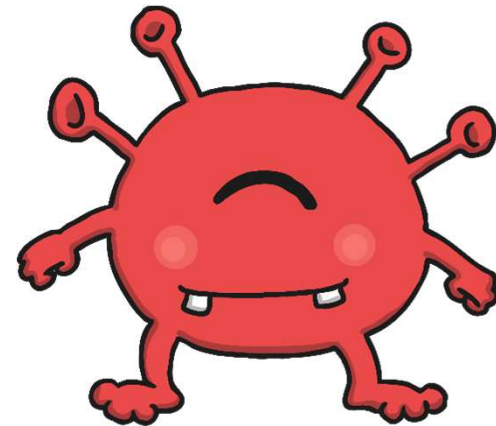
yop



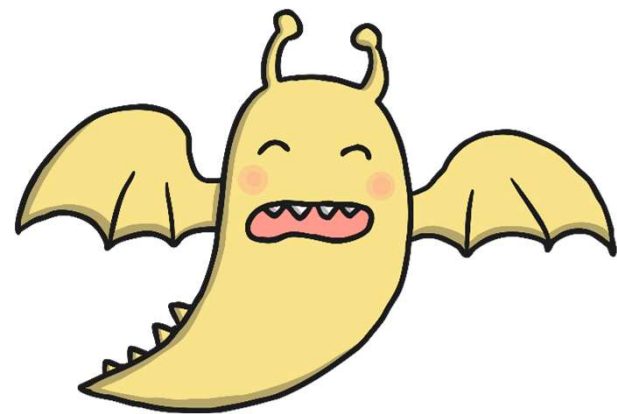
elt



desh



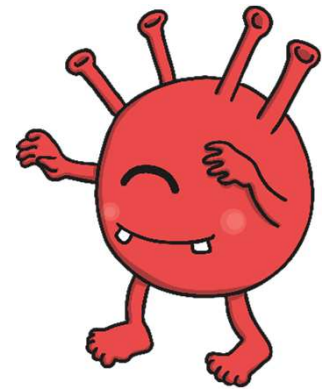
chab



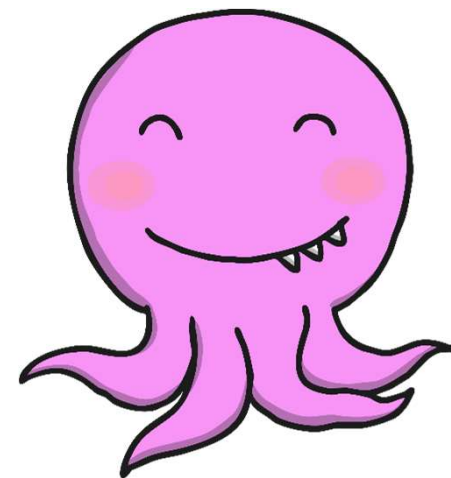
poil



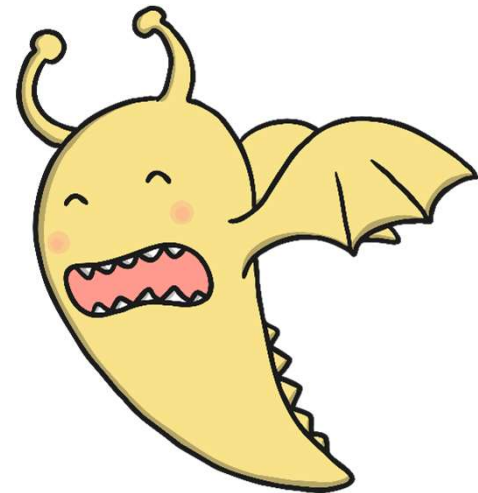
queer



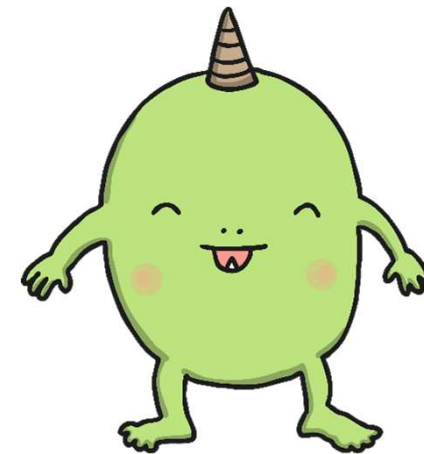
stin



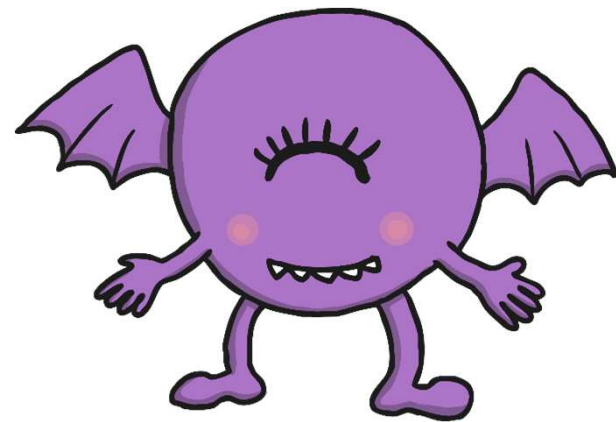
proom

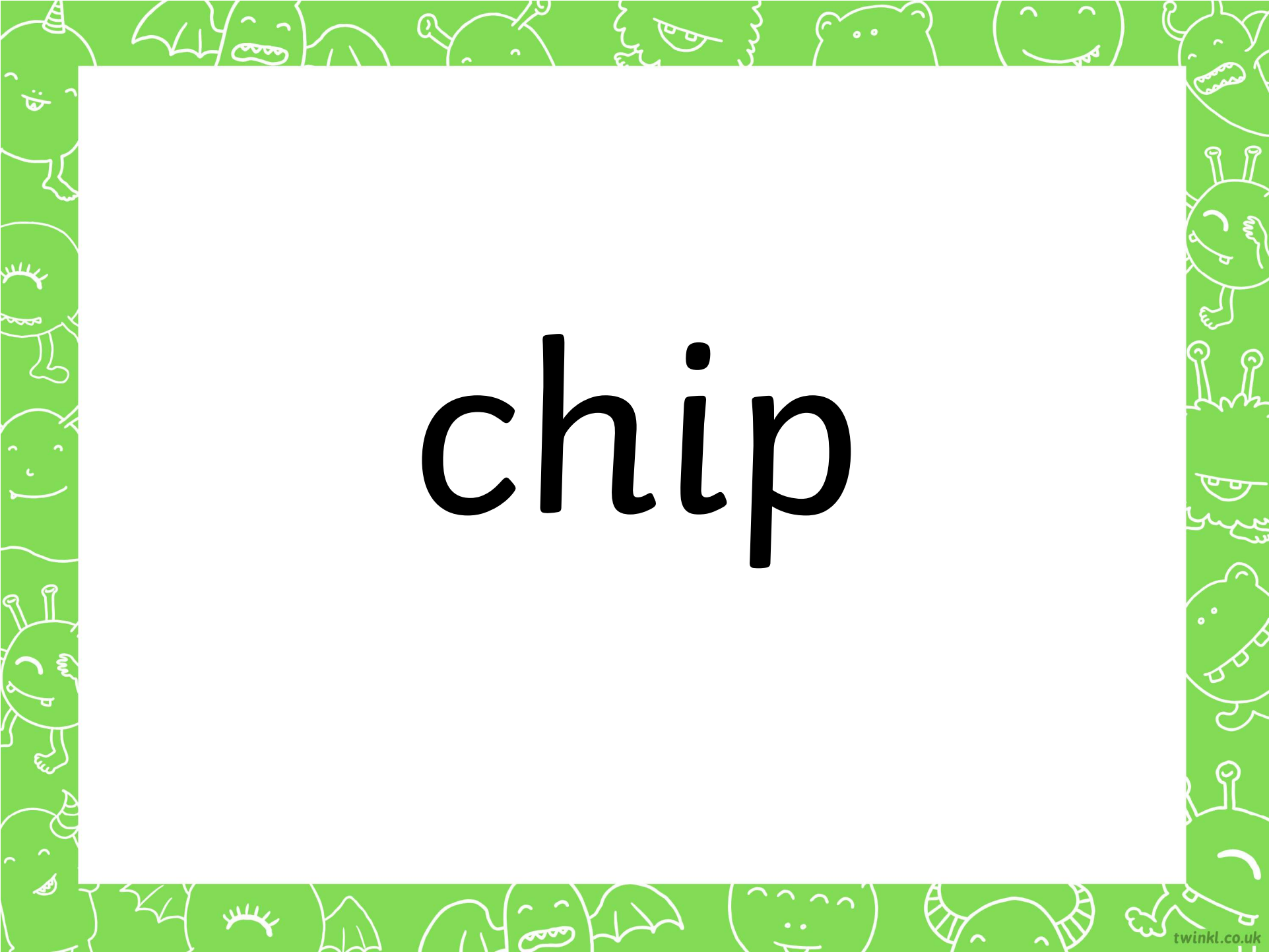


sarps



thend





chip



jazz

farm



thorn



stop



truck

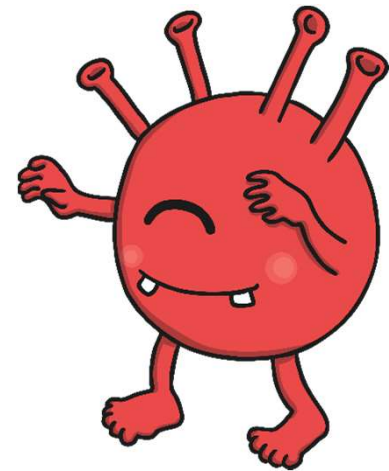


jump

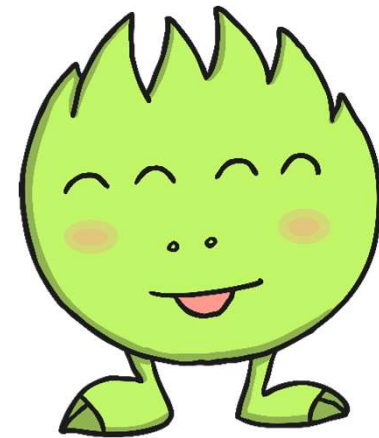


lords

high



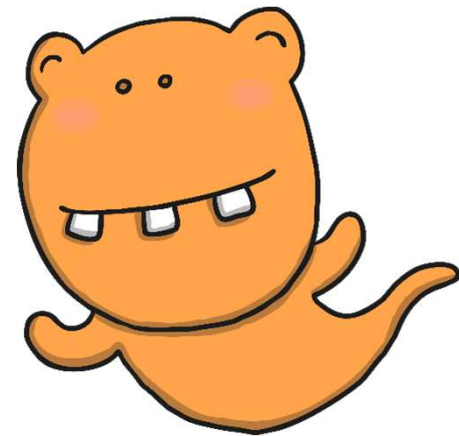
girst



baim



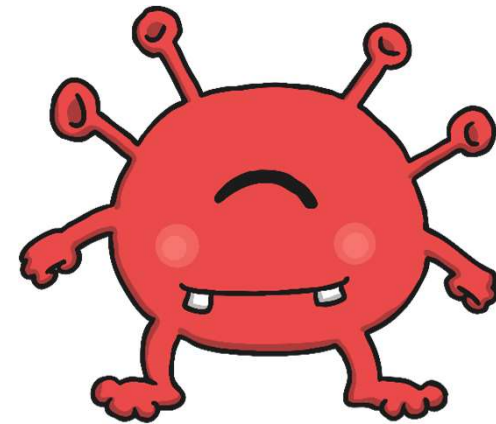
yune



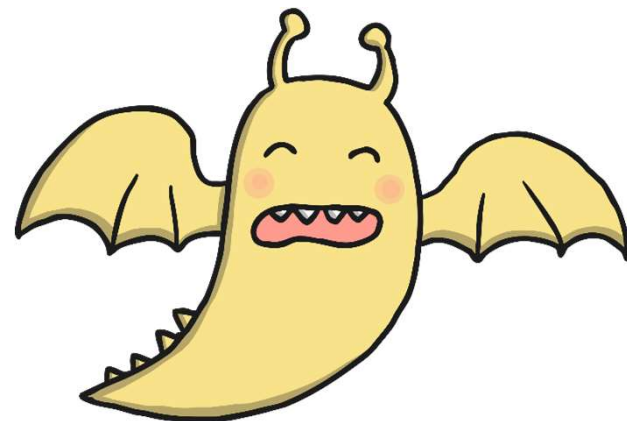
flods



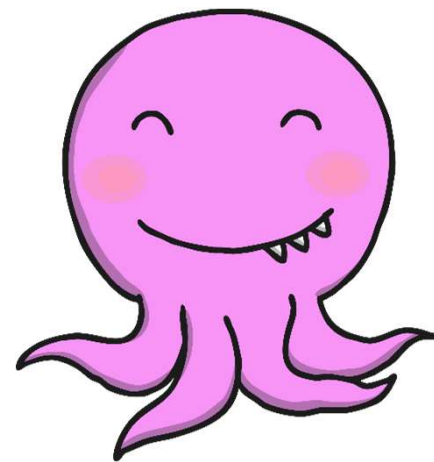
groiks



strom



splaw

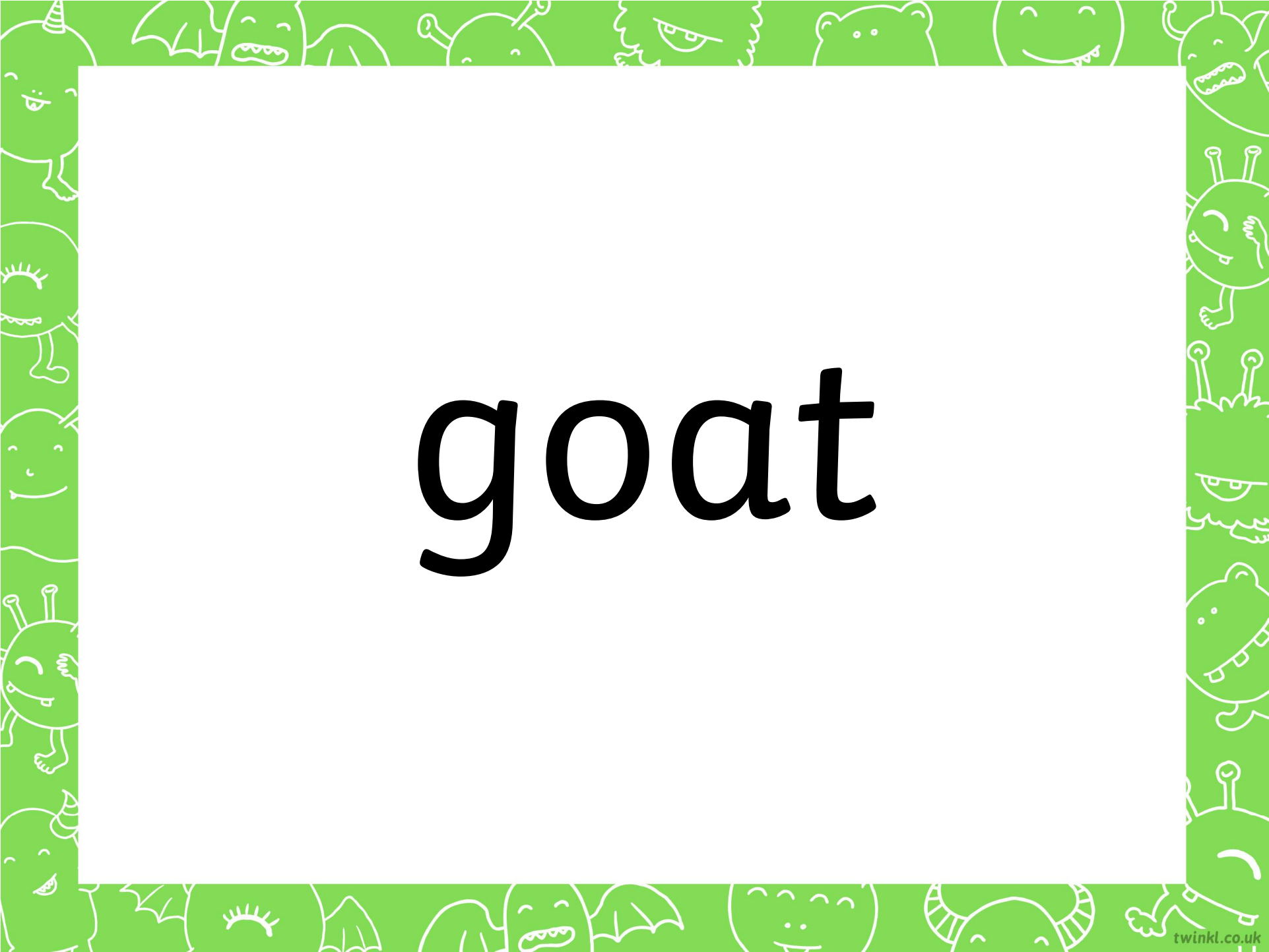




fair



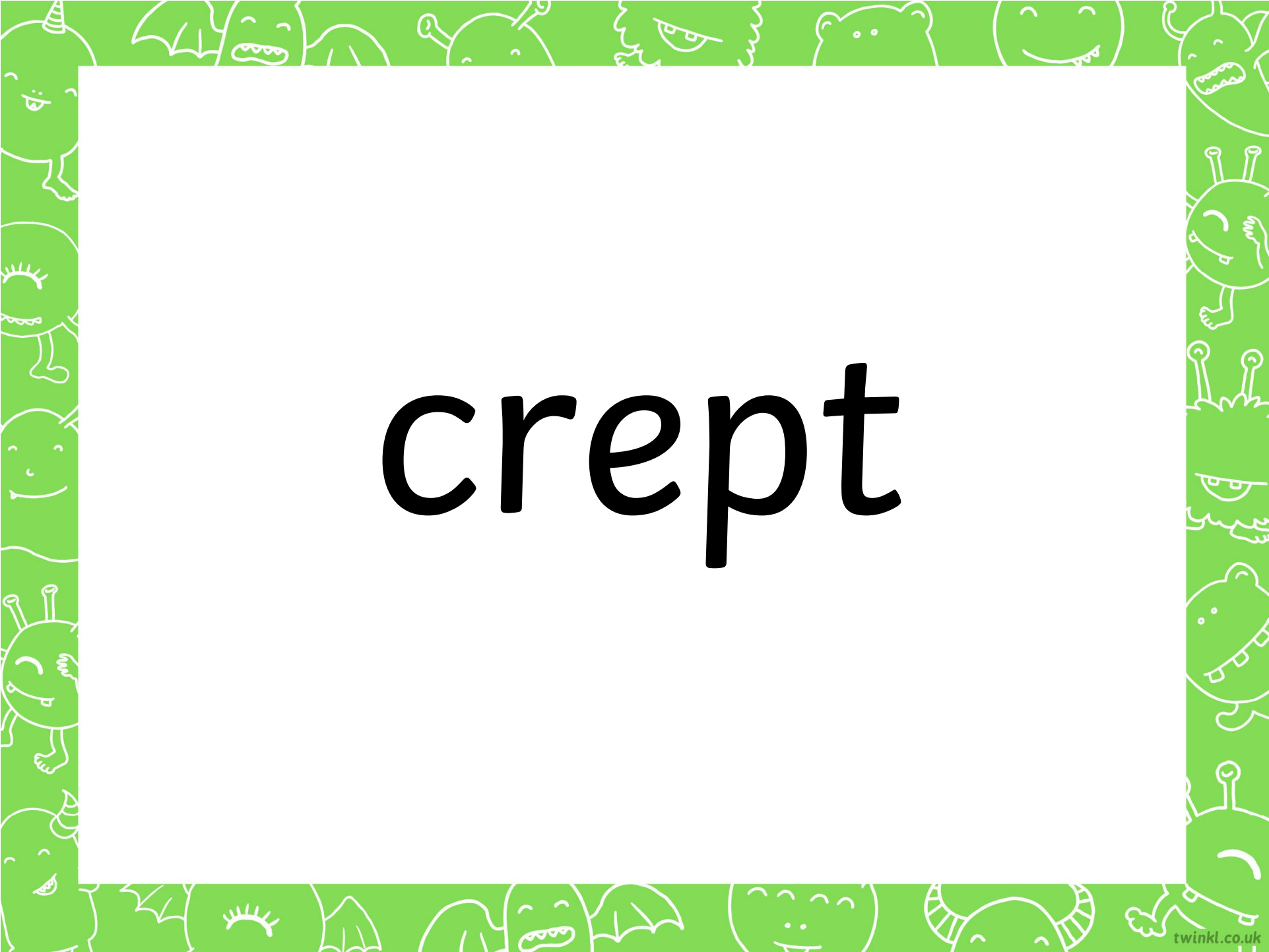
flute

The image features a vibrant green border that frames a central white area. This border is decorated with a repeating pattern of white line-art illustrations. These illustrations include various cartoonish creatures: some resemble dinosaurs or prehistoric animals, others look like friendly monsters with large eyes and simple bodies, and some are more abstract, like a creature with a single eye and a long tongue. The central white area is a large rectangle, and the word "goat" is written in its center in a bold, black, sans-serif font.


goat




shine



crept



shrubs



scrap



stroke




index



turnip



waiting



portrait