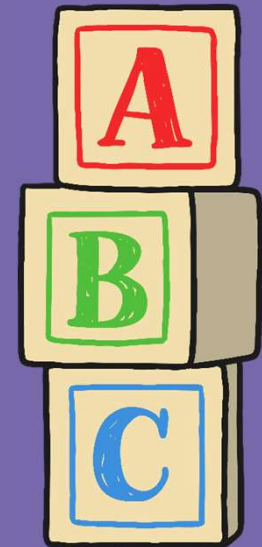




Year One

Phonics Screening Check

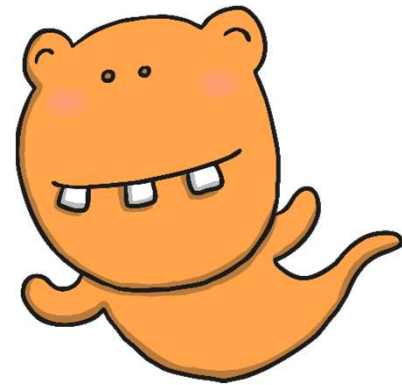
Children's Materials



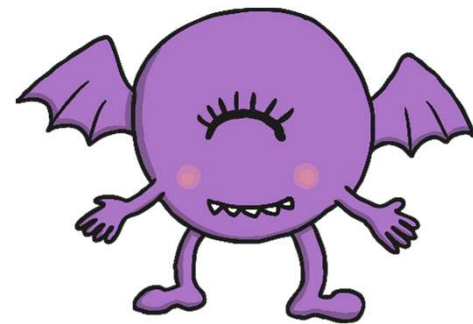
fot



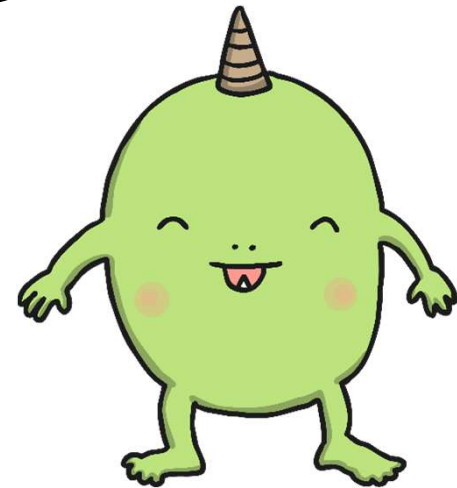
keb



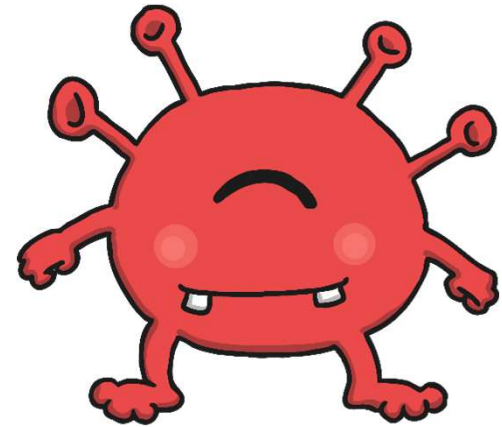
gan



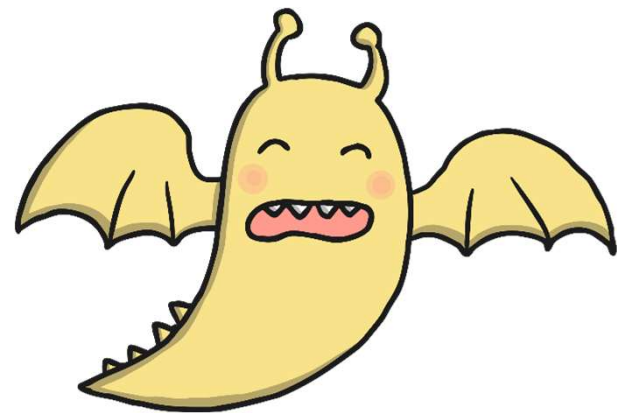
ulp



poth



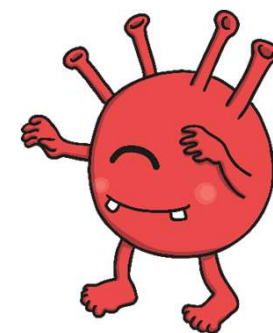
shan



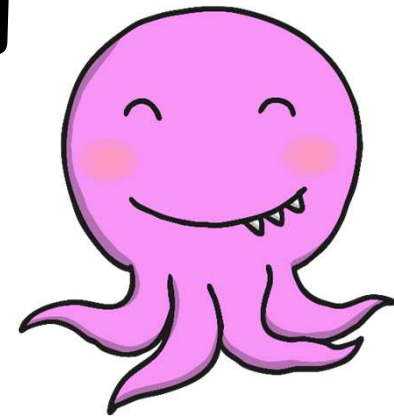
veen



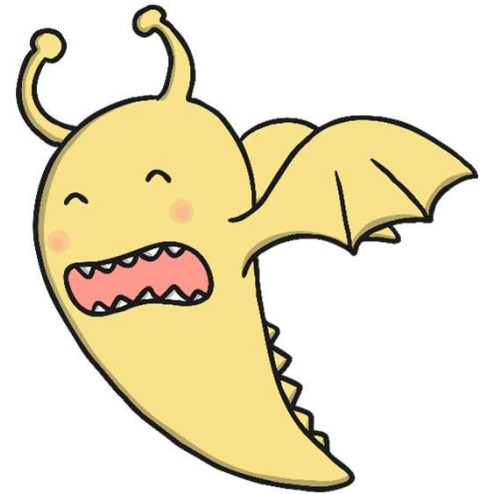
quorg



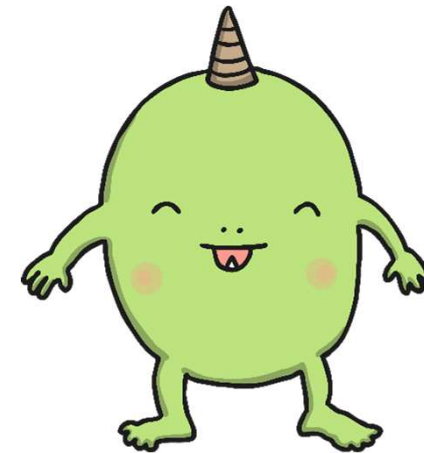
drap



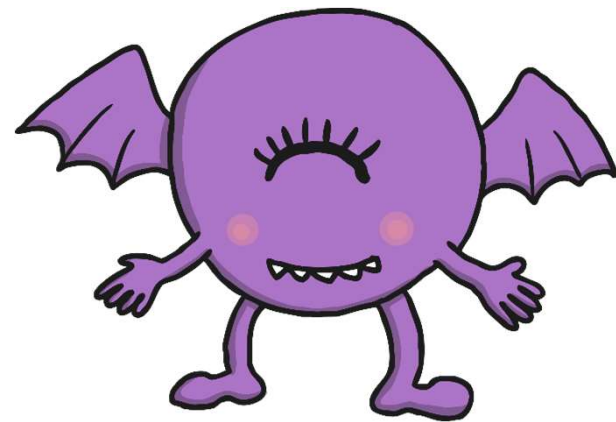
flarm



lect



voisk



thin



peck



torn



cheek



A decorative purple border surrounds the central text. It features a repeating pattern of white line-art cartoon monsters, including some with horns, wings, and various facial expressions like smiling and grinning.

trap



snarl



A decorative purple border surrounds the central text. It features a repeating pattern of white line-art cartoon monsters, including a unicorn, a bat, a dinosaur, a bear, a smiling face, a monster with a single eye, a monster with two antennae, and a monster with a single horn.

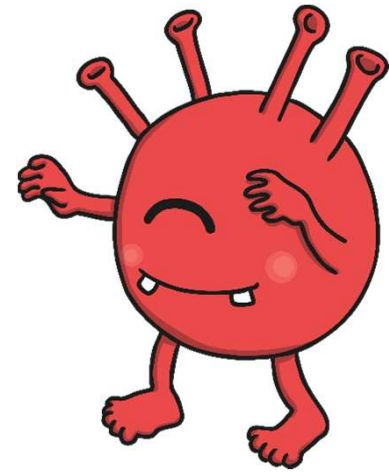
milk



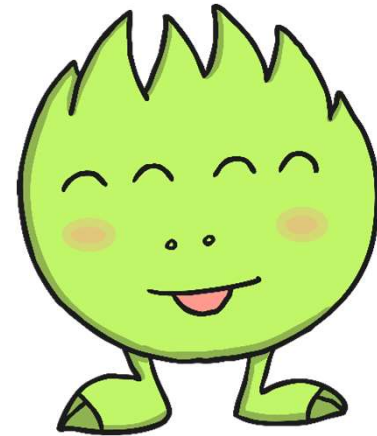
moist



quigh



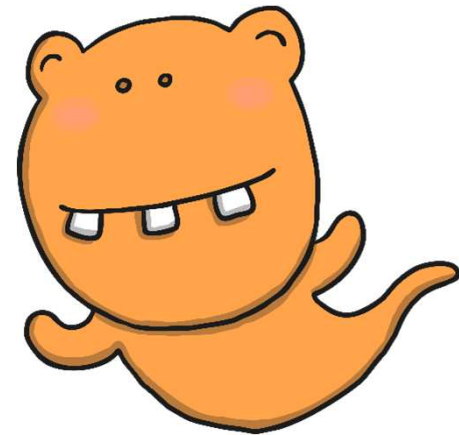
herks



jorb



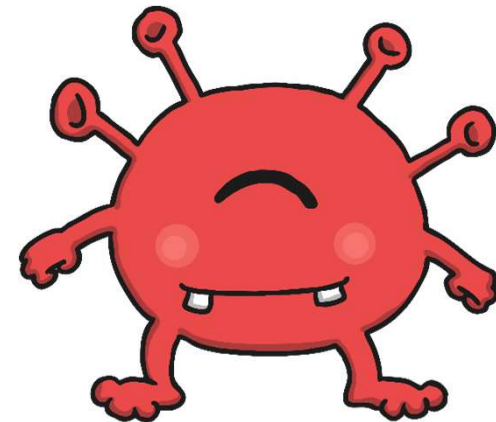
zale



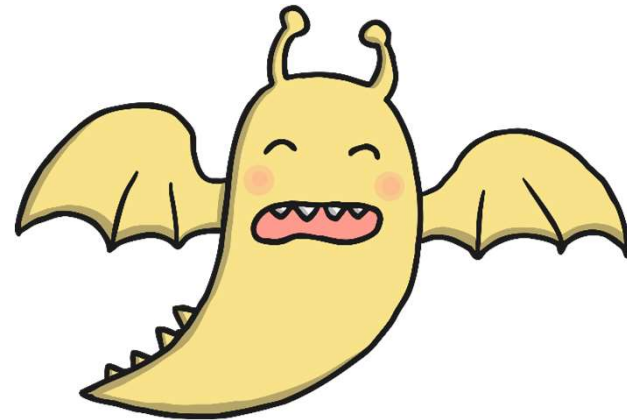
bluns



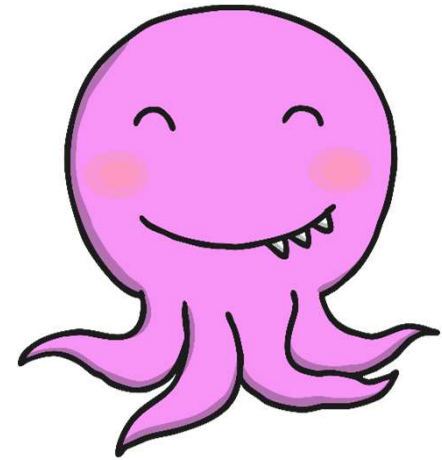
skard



plot



strabe



toy



spike



fuel

name



A decorative purple border surrounds the central text. It features a repeating pattern of white line-art cartoon monsters, including a unicorn, a bat, a dinosaur, a bear, and various alien-like creatures with different expressions and features.

props

spoilt



A decorative purple border surrounds the central text. It features a repeating pattern of white line-art cartoon monsters, including various alien heads, a dinosaur, and a creature with a single eye.

scram

A decorative purple border surrounds the central text. It features a repeating pattern of white line-art cartoon monsters, including a unicorn, a bat, a dinosaur, a bear, and various alien-like creatures with different expressions and features like horns, wings, and antennae.


strike

panic



A decorative purple border surrounds the central text. It features a repeating pattern of white line-art cartoon monsters, including a unicorn, a bat, a dinosaur, a bear, and various alien-like creatures with different expressions and features.

second



tantrum

A decorative purple border surrounds the central text. It features a repeating pattern of white line-art cartoon monsters, including a unicorn, a bat, a dinosaur, a bear, a smiling face, a monster with a single eye, a monster with two antennae, and a monster with a single horn.

reaching